

# RT-17 (A&B)

## 1 Instrument Refraction Unit&Chair

The compact design allows for effective eye examinations even in narrow spaces.

Specification(mm)

Unit Table	External Dimension	970(W) x 1380(D) x 1750(H) (A) 930(W) x 1200(D) x 2000(H) (B)
	Table Size	900 x 420
	Table Height	815
	Rated Voltage	AC 110 or 230V / 50 or 60Hz
	Power consumption	260VA
	Table Rotation Angle	90°
	Drawer Size	547(W) x 350(D) x 59(H)
	Allowable Loading Weight of Table	30kg
	Net Weight	100kg(A), 92kg(B)
Chair (RC-400)	External Dimension	460(W) x 490(D) x 870(H)
	Seat Height	Min.420 ~ Max.670
	Up/Down Stoke&speed	250mm, 15mm/sec
	Allowable Loading Weight of Chair	150kg
	Net Weight	18kg
Total Net Weight (Unit+Chair)		118kg (A), 110kg (B)

RT-17A ▲

RT-17B ►

### Feature



#### The Table Rotates 90 Degrees

A structure that facilitates patient access by attaching a rotating table.



#### Storage Space

Very convenient to use the phoropter due to storage space of Trial Lens.



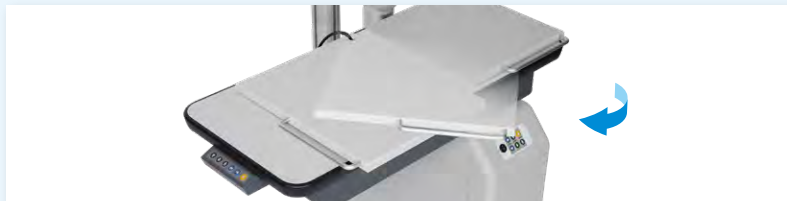
#### Console(17A)

There is Console with easy operation. (The blue buttons are available only for Type A)



#### Table Switch(17A)

Control functions of unit chair as central control system. (The blue buttons are available only for Type A)



#### Swing Bed for ARK

No interference from the phoropter arm by adopting ARK bed & optimize the space utilization.



#### LED Lamp & Hanger

Minimize power consumption by adopting LED lamp.  
There is the cover which can arrange phoropter's power cables and other lines.



#### Phoropter Arm

The auto arm function makes the Phoropter test easier

RT-17A : Auto phoropter Arm  
RT-17B : Counter Balanced Arm

**Right Handed Type and Left Handed Type** : You may choose it both right handed type and left handed type depends on Characteristics of Doctor's Office.

#### Applicable Chair

RC-100, 200, 400, 500

# RX-2000

## 1 Instrument Refraction Unit&Chair

This simple design make more refined atmosphere of the doctor's office. It is very convenient to adjust height of chair and silde table at the same time, and possible to purchase it both left handed type and right handed type depends on characteristics of Doctor's office.

Specification(mm)

Unit Table	External Dimension	1400(W) x 2400(D) x 2000(H)
	Table Size	830 x 415
	Side Table Size	1440 x 660
	Table Height	Min.755~Max.920
	Up/Down Stroke & Speed	165mm, 25mm/sec
	Table Sliding Stroke	500
	Drawer Size	480(W) x 485(D) x 65(H)
	Allowable Loading Weight of Table	30kg
	Rated Voltage	AC 110 or 230V / 50 or 60 Hz
	Power Consumption	250VA
Chair (RC-200)	Net Weight	137kg
	External Dimension	640(W) x 720(D) x 1080(H)
	Seat Height	Min.475~Max.725
	Up&Down Stroke Speed	250mm, 20mm/sec
	Allowable Loading Weight of Chair	160kg
Total Net Weight (Unit+Chair)		179kg



**RODEK**

### Feature



#### Sliding Table

The slide table is convenient to use thanks to the one-touch unlocking device. The slide method minimizes the doctor's movement, and allows the doctor to adjust the height of the table, which helps reduce fatigue.



#### Console

Able to control all functions of unit chair as central control system and supply a storage space.



#### LED Lamp & CP Installation

No glare and minimal power consumption and semi-permanent durability by using LED lamp. Able to equip with CP for monitor of video display and for eyesight test of the Slit Lamp.



#### Charging Well

Various types of Retino Scope can be charged

**Basic Chargeable Model :** Welch Allyn, Neitz

**Optioanl Model :** Keeler, Heine



#### Foot Switch

Able to adjust the height of chair as well as control panel.



#### Storage Space

Very convenient to use the phoropter due to storage space of Trial Lens.

**Comparability and Selective Design :** By adding the Free Voltage function to the slit lamp power supply, all slit lamps from manufacturers can be installed. Capable of installing CP for video display monitor and CP for visual acuity test with Slit Lamp.

**Right Handed Type and Left Handed Type :** You may choose it both right handed type and left handed type according to Doctor's preference.

#### Applicable Chair

RC-100, 200, 300, 400, 500

## RX-3000

### 1 Instrument Refraction Unit&Chair

Possible to tilt seat back, rotate the headrest, armrest, and seat. Also, it is able to make to lowest location of chairs as one touch. This is the Unit Chair at ergonomic design that enables to take examination as one-stop including eye testing through Phoropter. You may purchase it both left handed type and right handed type depends on the characteristics of the Doctor's office.

#### Specification(mm)

Unit Table	External Dimension	1400(W) x 1600(D) x 2000(H)
	Table Size	830 x 415
	Table Height	Min.755 ~ Max.920
	Drawer Size	480(W) x 485(D) x 65(H)
	Allowable Loading Weight of Table	30kg
	Up/Down Stroke&Speed	165mm, 25mm/sec.
	Table sliding Stroke	500
	Rated Voltage	AC 110 or 230V / 50 or 60Hz
	Power Consumption	250VA
	Net Weight	137kg
Chair (RC-300)	External Dimension	640(W) x 960(D) x 1250(H)
	Seat Height	Min.520 ~ Max.770
	Up/Down Stroke&Speed	250mm, 20mm/sec
	Seat Reclining Angle	110 ~ 170°
	Headrest Reclining Angle/Stroke	90° / 150mm
	Rotation Chair / Armrest Angle	350° / 90°
	Allowable Loading Weight of Chair	160kg
	Net Weight	82kg
Total Net Weight (Unit+Chair)		219kg


**RODEK**

### Feature



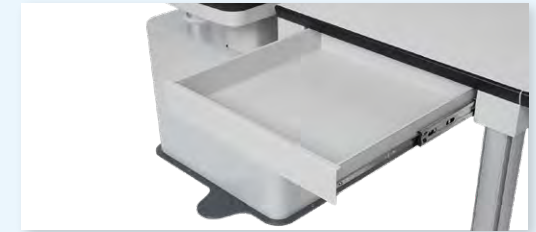
#### Slide Table

Able to operate Up&Down of slide table and On/Off of indoor lamp of clinic room. Also it is able to increase the clinic's convenience with automatic function that can integrate with table.



#### Console

Able to control all functions of unit chair as central control system and very convenient to use slide table due to selection of one-touch unlocking device.



#### Storage Space

Very convenient to use the phoropter due to storage space of Trial Lens



#### Phoropter Arm

Auto-arm function which can install the phoropter for the patient's eye examination is able to be one-stop Clinic.



#### Charging Well

Various types of Retino Scope can be charged.

**Basic Chargeable model :** Welch Allyn, Neitz  
**Option Model :** Keeler, Heine



#### Foot Switch

Able to adjust the height of chair as well as control panel.

**Comparability and Selective Design :** By adding the Free Voltage function to the slit lamp power supply, all slit lamps from manufacturers can be installed. Capable of installing CP for video display monitor and CP for visual acuity test with Silt Lamp.

**Right Handed Type and Left Handed Type :** You may choose it both right handed type and left handed type according to Doctor's preference.

#### Applicable Chair

RC-100, 200, 300, 400, 500

# RX-2030

## 1 Instrument Refraction Unit&Chair

RX-2030 is the new generation of highly durable as well as customer oriented design from RODEK. Adopting LCD as a cutting-edge console, customers feel facilitate it easily

Specification(mm)

Unit Table	External Dimension	950(W) x 750(D) x 2100(H)
	Arm(Table) Height	Min.790 ~ Max.990
	Up/Down Stroke&Speed	200mm, 15mm / sec
	Rated Voltage	AC 110 or 230V / 50 or 60 Hz
	Power Consumption	250VA
	Allowable Loading Weight of Table	30kg
	Net Weight	102kg
Chair (RC-500)	External Dimension	650(W) x 770(D) x 1240(H)
	Seat Height	Min.510 ~ Max.760
	Up/Down Stroke&Speed	250mm, 20mm/sec
	Allowable Loading Weight of Chair	160kg
	Net Weight	58kg
Total Net Weight (Unit+Chair)		160kg





### Feature



#### LED Lamp

Easy to adjust an angle as well as height

2 Steps for LED Lamp : 50% & 100%



#### Counter Balanced Arm & Monitor Arm

Counterbalanced phoropter arm locks and allows adjustment with a single hand.

Various types of monitors could be mounted with monitor arm easily.



#### Charging Well

Two Rechargeable wells accommodate all brands hand held Retino-Scopes.

**Basic :** Welch Allyn, Neitz

**Optional :** Keeler, Heine (It could be necessary to be modified in case of the latest version)



#### Arm for Slit Lamp Table

The Stroke is 7.8"(20 cm) and the allowable loading weight is 66 lbs(30Kg). Could be adjusted Arm easily by User.



#### Power Outlet for Slit Lamp

Power can be supplied from the closest location to the slit lamp.



#### Switches(Slit lamp arm & chair)

Raise and lower switches on the slit lamp arm control slit lamp arm&chair height adjustments.



#### Button Console(Basic)

Durable switches, logically positioned.

Soft touch feeling.



#### LCD Console(Optional)

Luxurious Appearance& Logical Console

2 Steps for LED Lamp : 50% & 100%  
Modernized LCD with just touch

### Applicable Chair

RC-500 (Basic model), RC-300 (Premium model)